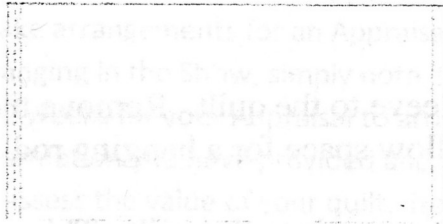
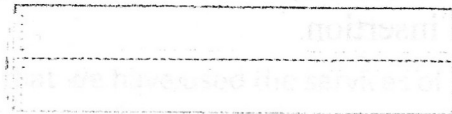


HOW TO SEW A HANGING SLEEVE ON THE BACK OF YOUR QUILT

Sew a hanging sleeve after the quilt is bound:



Fold sides and sew.



Sew lengthwise, wrong sides together.
Press seam open.



After sewing to quilt, sleeve will poosh
out to allow space for rod.

Sewing a sleeve on the back of your quilt makes it easy to hang the quilt for display at home or in a quilt show. The sleeve can be permanent or temporary.

1. Cut or piece together fabric to make a strip 9" tall and the same width as the quilt.
2. Fold under short edges $\frac{1}{4}$ ", wrong sides together. Fold under again. Press. Sew a straight seam to hem the folds.
3. Now fold the strip lengthwise, wrong sides together, aligning its raw edges. Sew together with a $\frac{1}{4}$ " seam allowance. Press the seam allowance open.

4. Place the open seam against the quilt's back. Center and pin the top edge of the tube to the back of the quilt, $\frac{1}{2}$ " below the binding.
5. Use a blind stitch to sew the top edge of the tube to the quilt backing. Stitch into the batting but not through the quilt front.
6. Smooth the sleeve along the quilt back, then make a $\frac{1}{2}$ " fold along its length to create a pleat. Leave the pleat intact, pin the sleeve bottom to the quilt.
7. Blind stitch the lower edge of the sleeve to the quilt. Remove the pins. The sleeve will pooch out a bit to allow space for a hanging rod.
8. Blind stitch the back sides of the sleeve ends to the quilt. This will prevent accidentally inserting the rod behind the sleeve. Leave the sleeve front sides unsewn to allow for rod insertion.

Quilt Sleeve Options:

You can use any fabric for the quilt sleeve, from plain muslin to the same fabric you used for the back of the quilt.

Quilt shows usually require a 4" minimum sleeve. Read show rules before assembling the sleeve for your quilt.

For a wallhanging, the sleeve does not need to be as wide as for a full size quilt but must be large enough to easily hold the rod that will be used for hanging. Generally, a 2" pocket will be adequate for most rods or dowels used in a home. Therefore, cut your fabric approx. 5" tall.